

Icon Water

Position Description



Title:	Technical Director (Design and Engineering)
Position number:	7562
Classification:	Level 6 Zone B
Group:	Infrastructure Planning and Engineering
Reports to:	Manager Infrastructure Planning and Engineering
Direct reports	8
Indirect reports	7

Position overview

This role has primary responsibility to provide advice and technical leadership on the safety and integrity of Icon Water assets and systems in their relevant field. This role is delegated as the Technical Authority to meet requirements under the Water and Sewerage Technical Code.

Icon Water Limited (Icon Water) is an unlisted public company that is wholly owned by the ACT Government.

Icon Water's voting shareholders are the Chief Minister of the ACT and the Minister for the Environment and Heritage. Icon Water has corporate reporting and compliance obligations under *the Territory-owned Corporations Act 1990* and Corporations Law.

In addition to legislation relating to all management roles, you are responsible for specific outcomes required by legislation governing the supply of water and sewerage services including the *Utilities Act 2000*, *Water Resources Act 2007*, *Environment Protection Act 1997*, *Water and Sewerage Act 2000* and the *Public Health Act 1997*.

Your duty to your employer includes an obligation to carry out your work in a way that does not put Icon Water in breach of any legislative or regulatory obligations. Icon Water will have responsibility to provide suitable training and to make you aware of the legal obligations relevant to your work.

Under Icon Water's Integrated Management System, you are required to participate fully in, and lead for your own area of responsibility, all aspects of health, safety and environmental management, including risk assessment, hazard identification and control and incident reporting.

Group overview

The Infrastructure Services Group are responsible for the safe and effective ongoing operation and maintenance of the water and sewerage network providing services to Canberra and the ACT region. The Group is structured in a way to provide end to end water and sewer asset solutions. The Group is responsible for asset and growth strategy, portfolio, program and project development and planning, network and plant operations and maintenance, water and sewer capital works delivery, water and sewer asset reliability and performance, and technical engineering and standards development and maintenance.

Branch Overview

The Infrastructure Planning and Engineering Branch is responsible for asset and growth strategy, portfolio, program and project development and planning, analytics and modelling services, technical engineering advice and design management services to ensure the Icon Water's assets are safe, sustainable and fit for purpose in the long term.

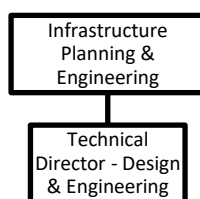
In conjunction with other ISG branches, the Infrastructure Planning and Engineering Branch leads the development of Icon Water's Asset Management System, Strategic Asset Management Plans, Asset Management Plans and 10 year investment plans to drive certainty in delivery and a clear line of site from strategy through to project delivery.

The Branch has a key responsibility to support the Infrastructure Delivery, Network and Major Plant Branches to safely and reliably meet our service standards in a sustainable manner for our customers and broader stakeholders.

The Branch also plays a key role in providing technical engineering standards, support and advice to a variety of internal and external stakeholders and keeping abreast of all regulatory and legislative changes as required.

The Infrastructure Planning and Engineering Branch is made up of the following teams:

- Strategy and Growth Planning
- Portfolio Planning
- Analytical Services
- Design and Engineering



Key responsibilities

Leadership

- As a Senior Principal Engineer, provide expert guidance and leadership to a diverse team involved in civil, mechanical, structural and electrical engineering, anticipating future challenges and strategically positioning the organisation to meet them.
- Oversee Icon Water's engineering registration process, liaising with Engineers Australia and the ACT government, and offering technical advice to ensure proper ongoing implementation.
- Establish and cultivate strategic relationships with other water utilities, contributing to a supportive and collaborative industry environment.
- Provide technical leadership and mentorship for engineers, technical officers and trades across teams and groups within the business.
- Represent Icon Water needs to external stakeholders (i.e. Utilities Technical Regulator) on technical matters of the relevant domain.
- Responsible for providing technical direction to the Engineering and Design team, overseeing capital works engineering design. This includes managing senior design engineers and the engineering design lead in coordinating design tasks with consultants, reviewing monthly progress reports, and holding regular meetings with design consultants under the Professional Engineering Partnership Agreement to monitor and discuss the technical health of design deliverables.
- Review, provide technical advice, and approve professional service engineering briefs to effectively manage risks and ensure projects meet the required quality and standards for complex designs.
- Manage an engineering and design-focused team, successfully delivering a range of complex infrastructure design projects from initiation through to concept and detailed design. Whilst creating a high-performing culture.

Technical authority

- In accordance with the Water and Sewerage Technical Code, fill the role of Technical Authority for provisions under both the Utilities Technical Regulation Act and W&S Technical Code, ensuring compliance with the requirements of the Utilities Technical Regulator.
- Keep up to date with relevant compliance obligations and communicate any material changes to the relevant responsible party within Icon Water.
- Lead the implementation and continuous improvement of Engineering within Icon Water, including developing, rolling out and maintaining engineering systems that support good engineering

practices. This includes leading the design and implementation of Icon Water's technical assurance framework.

Standards, specs. and approved products

- Responsible for developing, managing and updating Icon Water's technical specifications, standards, standard drawings, and guidelines across various engineering disciplines including civil, mechanical and structural.
- Manage Icon Water's product approvals process, including participating actively in the Water Services Association of Australia (WSAA) communities of practice to tackle emerging corporate and community issues particularly related to products and standards.

Technical advice

- Provide valuable advice and support to external parties, including working closely with the Professional Engineering Services partners, and internally to Infrastructure Delivery, and Developer Services, to ensure assets comply with required quality standards. This includes working with delivery teams to foresee necessary standards in advance of design activities and drafting or procuring standards as needed. Provide technical user requirements specifications for new projects.
- Provide technical advice to internal stakeholders, including the Investment Review Committee and other decision-makers to enable informed decision-making.
- Lead and oversee technical governance for allocated projects to ensure the approved asset objectives are realised. Governance entails providing business/technical expertise and guidance to the project manager, ensuring designs will deliver the agreed deliverables and to represent the project at the significant milestones.
- Lead the engineering investigation process into issues of material significance to the successful and efficient operation of Icon Water's assets including identifying the resultant action needed including initiating projects.
- Actively look for technical risks and opportunities that need to be highlighted for resolution.
- Other duties within the employee's skill, competence and training.

Qualifications, knowledge and experience

- Degree in one or more engineering disciplines relevant to the water industry, from an Australian university (eg civil, mechanical, structural); alternatively, an degree or equivalent from an overseas institution recognised by the Washington Accord and approved by Engineers Australia.
- Chartered engineer in one or more relevant disciplines, including registration as a Professional Engineer in the ACT
- Extensive experience (minimum 15 years) in the water industry including advanced technical knowledge of process and infrastructure used within the water and wastewater treatment plants and networks.
- Recognised as an authority in water engineering particularly in regard to civil engineering.
- Ability to lead and motivate a highly specialised and multi-disciplinary team in a high reliability environment.
- Ability to mount a technical 'argument' using a variety of communication formats in a convincing manner appropriate to the audience, typically senior executives, peers and the Board of Directors, in an environment where a diversity of conflicting agendas may exist.
- Ability to influence and negotiate outcomes through professional and productive engagement with senior executives and managers, peers, staff at all levels, customers and suppliers, while building and enhancing relationships.
- Advanced knowledge and experience in the integrity and optimisation of water and wastewater assets.
- A deep working knowledge of WSAA codes, safety-in-design requirements, HAZOP and CHAIR processes as well as the design, construction, operation and maintenance of fluid centric equipment and processes such as: pumps, piping, valves, vessels, tanks, blowers, compressors, clarifiers, centrifuges etc.
- Previous project management and/or design management experience.

Attributes and skills

- Safety: Prioritises safety outcomes and acts on safety issues promptly. Has the skills and knowledge to lead safety investigations.
- Strategic approach: Comprehends the wider contexts, develops long term goals and determines strategies and actions required to achieve those goals.
- Management skills: Plans and organises self [and others] to ensure the completion of tasks [and support others to succeed in their roles], applies process and procedure, ensuring compliance, and comprehends resource limitations.
- Decisiveness: Consistently makes sound decisions, acts given reasonable access to information and time, utilises information, knowledge and experience to analyse and form judgements.
- Integrity: Behaves in an honest and trustworthy manner, treats others fairly and is open about own misjudgements and any conflicts of interest which may be present.
- Negotiation skills: Listens to and assimilates information from others, identifying various potential outcomes and consequences, presenting persuasive arguments and winning concessions while maintaining relationships.
- Communication skills: Communicates effectively verbally and in writing, adapting style to suit different audiences.